



STANDARD



CRAFTSMAN



# Alysya

- Starting at 2,243 SF
- Single level living
- 3-5 Bedroom
- Optional 2nd floor
- Spacious owner's suite
- 2-4 Bathroom



**The Alyssa was the innovative plan that marked a turning point in our designs.**

The layout is a departure from the traditional, center hall ranch plans that are common to the Delaware beach area. The Alyssa stands in contrast to so many other home designs. It features front and rear porches, a large, open living space, and a layout that is a welcome departure from the traditional “center load” ranch floorplan. The kitchen is a focal point in the Alyssa, and the owner’s suite is very spacious. As with most of Aurora Home’s larger designs, the garage is larger than a typical production builder, and the house has many pre-designed options to allow you to personalize your home.



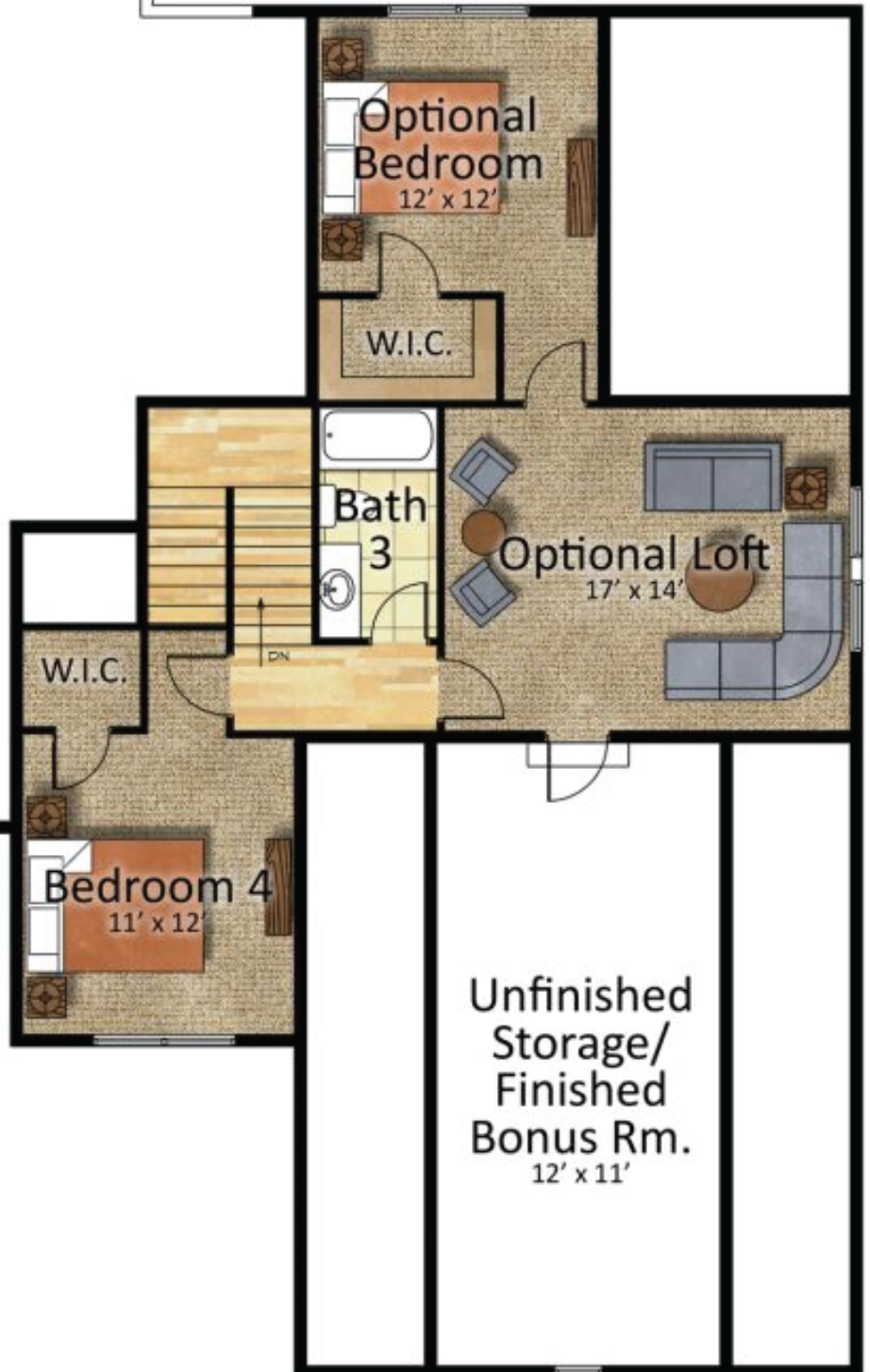
FIRST FLOOR

**What it is:**  
groundbreaking plan with great spaces indoor and out

**What it's not:**  
a three bedroom box with a hallway down the middle

Renderings are artist's interpretations. Actual home construction may vary. Optional features may be shown that are not included in the base price of the home. Furniture is not included in any of our homes. Plans subject to change without notice. Equal housing opportunity. Copyright 2021 Aurora Homes.

# OPTIONAL SECOND FLOOR



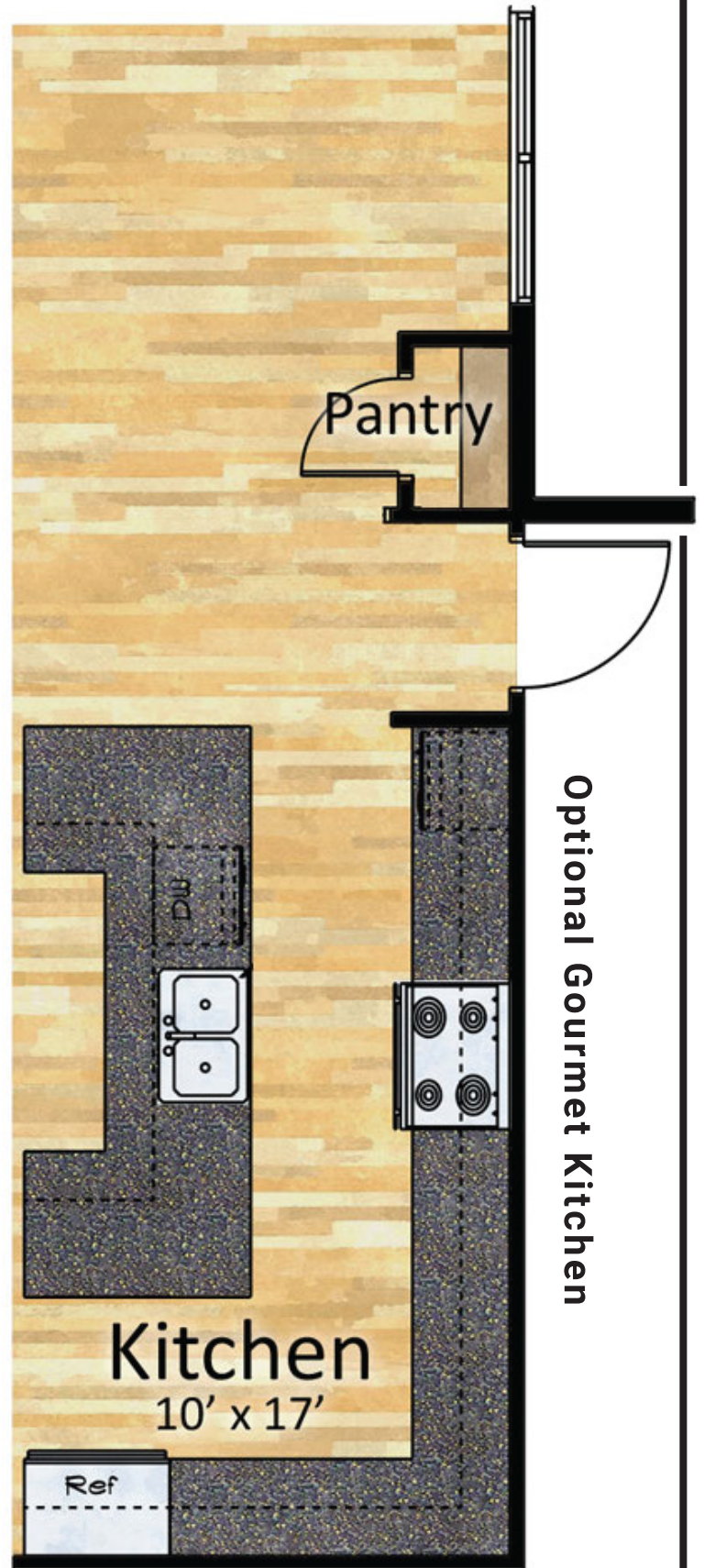


# PRE-DESIGNED OPTIONS

With room to expand, these are options that will accommodate what you may need now, or in the future.

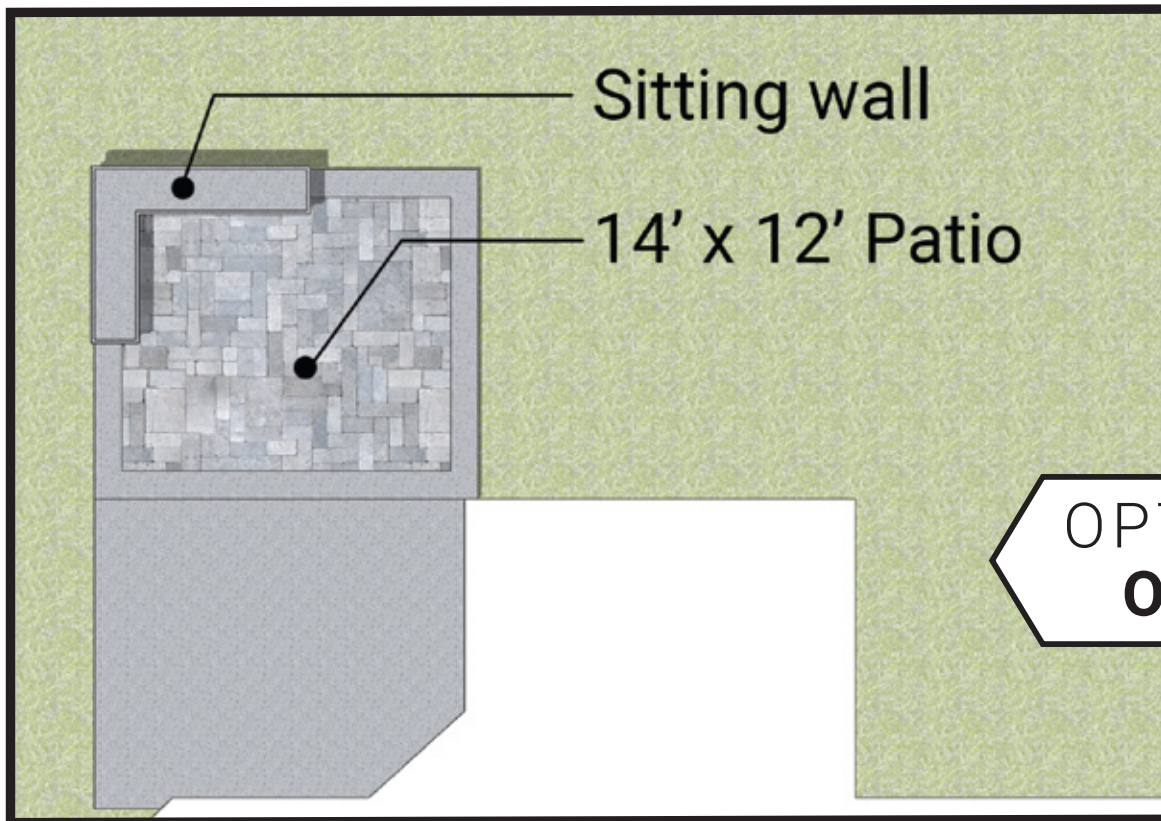
**We want you to be successful and comfortable in a home that best fits your style.**

### Optional Luxury Bath

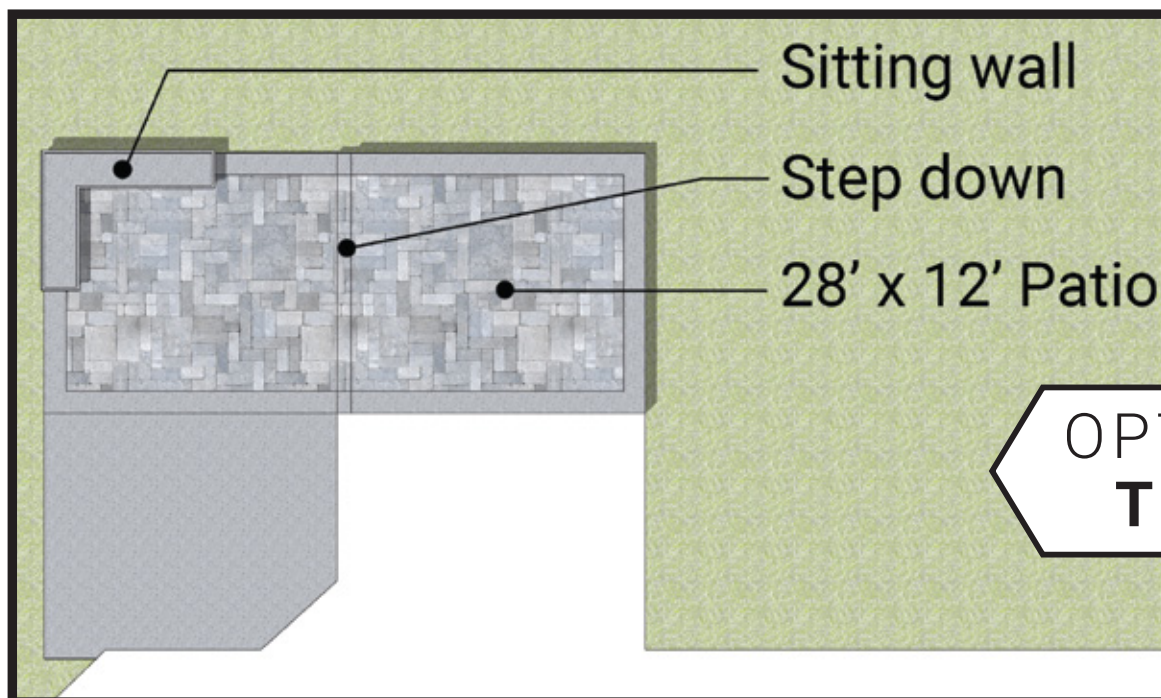


### Optional Gourmet Kitchen

# PRE-DESIGNED PATIO OPTIONS



OPTION  
**ONE**



OPTION  
**TWO**



# *Start your journey today.*

We can't wait to help you create a new home that is perfectly suited to your life. Our team is dedicated to walking you through the entire process from dream to completion. We stand behind our home for years after completion through our Limited Warranty.

**We are dedicated to our customers, innovation, responsibility, and our local economy.**



CONTACT US

The Alyssa is just a starting point -  
we'll guide you through the building experience.

302-329-8881

[www.AuroraHomesDE.com](http://www.AuroraHomesDE.com)

[Keith@AuroraHomesDE.com](mailto:Keith@AuroraHomesDE.com)

